

An environment
to cultivate *Success*



Serviced offices
Available from 1 MARCH 2024



Stand No. 4642, corner of Mwaimwena Road and Addis Ababa Drive, Lusaka, Zambia

About

NOVARE CENTRAL OFFICES



A world class landmark Novare development
Completed by Novare, this iconic property is situated on Addis Ababa circle in Lusaka, a hub of top tier businesses, hotels and residences in the area.

The building offers:

- Prime top tier location in Longacres
- High visibility
- Excellent vehicular access
- Advanced integrated security and BMS (building management systems)
- Ample secure under cover parking, exceeding current Lusaka offerings
- High speed lifts
- Fully air conditioned
- Full backup power
- Water purification
- 24 Hour security / Access control
- P Grade (above Triple A Grade)
- High quality modern finishes
- Additional amenities such as: Bank; coffee shop.

We offer an office environment second to none in Lusaka, with nearby eateries and services on the premises, you are covered for all the basic necessities under one roof. In case you need more, we are situated very close to shopping malls popular dining spots, banks, popular business hotels, city health & fitness centre and strong road networks.

Existing Clients:



NOVARE

CENTRAL
LUSAKA

Location

NOVARE CENTRAL OFFICES



Existing Clients:



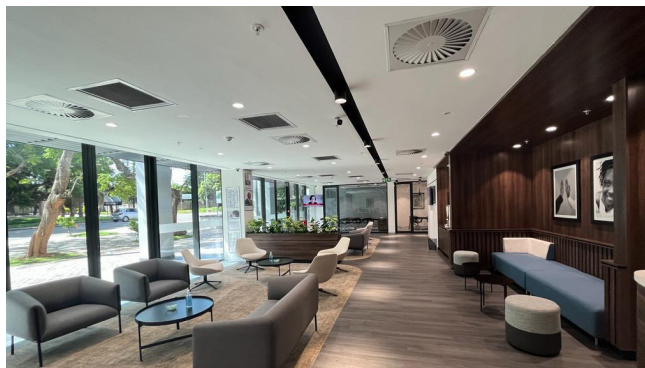
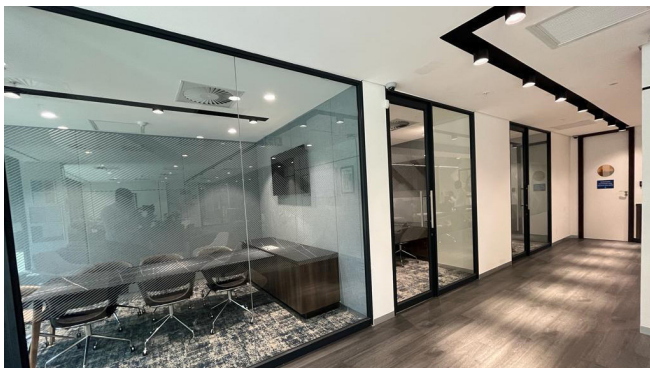
Interior



Existing Clients:



Interior



Existing Clients:



Packages

NOVARE CENTRAL

SPACE	PRICE/ MONTH	PRICE/ WEEK	PRICE/ DAY	PRICE/ HOUR
SHARED OFFICE PRIVATE DESK	\$120	\$30	\$6	
PRIVATE OFFICE - 12 SEATER	\$1800			
PRIVATE OFFICE - 18 SEATER	\$2700			
WORKBAR DESK	\$75	\$25	\$5	
MEETING ROOM				\$10

- 24 hour Security
- Uncapped wifi
- IT support
- Access to printer
- Secure parking
- Daily cleaning
- Back up generator
- Break away area
- Lockable desks
- Furniture
- Kitchen
- Reception
- Training room
- Boardroom
- Professional environment



Existing Clients:



Book a Space

in our premium A-Grade offices



CONTACT:

- **Tim Ware**
+260 966 751203
tim.ware@zm.knightfrank.com
- **Mutimbwa Liswaniso ,**
+260 967 377261
mutimbwa.liswaniso@zm.knightfrank.com
- **Augustine Mwenya**
+260 97 951 8518
augustine@novare.com
- **Chris Coetzee**
+260 96 125 1459
chris@novare.com

Stand No. 4642, corner of
Mwaimwena Road
and Addis Ababa Drive,
Lusaka, Zambia

NOVARE

Existing Clients:

